

No doubt you've noticed the flurry of activity taking place at the park since our winter edition of Write-Up, which is largely due to a series of new occupiers joining our exclusive community and existing occupiers experiencing a busy few months too.

Not only is building work continuing apace, but the Park, as it begins to mature, is demonstrating considerable pulling power.

I would also like to extend a warm welcome to a number of new occupiers to the Mansion House including SG Hambros Private Banking, Glassworks International and Pulse Scientific.

The vision for Chesterford Research Park - to create state-of-the-art laboratory and office space, specifically designed for research and biotech companies really is becoming a reality. We are keeping the momentum going at full pace, with plans for new buildings being worked up and submitted for planning permission.

You'll see from this latest issue that the focal hub of Chesterford, The Nucleus, continues to win prestigious Awards and offers more social events and activities than ever before.

I very much hope you enjoy this update, and, as always, do please let us know if there is anything you want to add to Write Up in the future.

Martin Sylvester

# WRITE-UP

NEWS & VIEWS FROM CHESTERFORD RESEARCH PARK

## World-Class Life Science company signs up to Chesterford laboratory

In a move that puts the spotlight on Chesterford, Illumina Inc, one of the world's leading developers, manufacturers and marketers of next generation life-science tools and integrated systems, has taken a pre-let of the 41,500 sq ft Gonville Laboratory to establish its new European headquarters at Chesterford Research Park.

In November 2006, Illumina acquired Solexa, who have been established at Chesterford Research Park since October 2000. Since that time, Chesterford has assisted the company's growth through the provision of different types of laboratory and office accommodation.

Martin Sylvester, Director of Churchmanor Estates Plc, joint developers of the Park with Morley Fund Management commented, "Securing such a major pre letting is a real coup for Chesterford. We have worked hard to provide both our new and existing occupiers with the capability to expand at Chesterford and also to provide excellent Park facilities to ensure that they and their staff enjoy working here."

He continued: "This is an important pre letting and is a tremendous endorsement for Chesterford Research Park that another existing occupier has decided to expand its facilities. Illumina's increased presence strengthens the Park's reputation as a centre of excellence in the South Cambridge Biotech cluster."

Alan Kersey, VP & Site Manager for Illumina said: "Illumina's Chesterford site plays a key role in research and development. We have enjoyed a long-standing collaborative relationship with the Chesterford Research Park management group, and look forward to extending our tenure in this new facility."

This is the second major letting Chesterford Research Park has secured in recent months, following closely on the announcement that Pfizer Inc., the world's largest pharmaceutical company, is extending its R&D operation at the Park by leasing the new 41,850 sq ft Emmanuel Laboratory and occupying additional temporary laboratory accommodation.



GONVILLE BUILDING

# Groundbreaking event marks beginnings of new laboratory



ILLUMINA EXECUTIVES FROM LEFT: ALAN KERSEY - VICE PRESIDENT AND SITE MANAGER, CHRISTIAN HENRY - SENIOR VICE PRESIDENT AND CHIEF FINANCIAL OFFICER, TRISTAN ORPIN - SENIOR VICE PRESIDENT SALES, DAVID BENTLEY - VICE PRESIDENT AND CHIEF SCIENTIST AND SANDY MCBEAN - GENERAL MANAGER EUROPE.

Chesterford Research Park welcomed a gathering of high profile executives from Illumina Inc who donned hard hats to mark the start of construction of the Gonville Laboratory, which will become the company's European HQ.

Senior Vice President of Illumina Inc, Christian Henry, was presented with an engraved stainless steel shovel by ceremony hosts and joint developers of the park Churchmanor Estates Plc and Morley Fund Management. The official groundbreaking



ceremony was followed by a reception for Illumina staff at The Nucleus.

Speaking at the event Christian Henry said: "South Cambridgeshire has long been a centre for developing excellent medical research and development in which Chesterford will help us play a key role in undertaking ground breaking discoveries. We have enjoyed a long standing collaborative relationship with the park's management who genuinely understands the needs of research-based companies.

Henry continued: "This is coupled with state of the art support facilities that ensure our staff enjoy working here and look forward to moving into our new facility."

The Gonville Laboratory will incorporate the latest design requirements for Illumina resulting in a highly flexible building that caters for the company's technological needs.

# Going...going...gone!

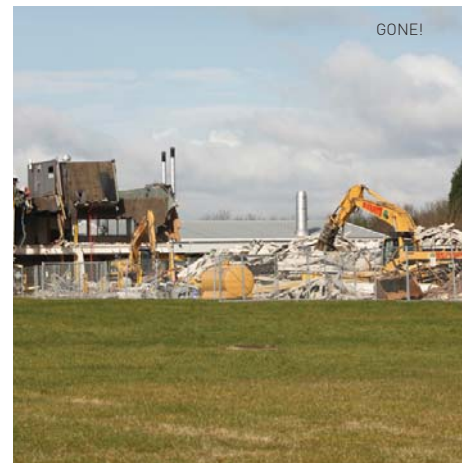
It's taken just eight weeks for this 35,000 sq. ft. building, formerly known as 'Biology 2' to be raised to the ground.



Over 70% of materials from the demolished building have been recycled including concrete, bricks and the foundations, which have been crushed on site and transferred to Plot 200 to be used as hardcore.



The area will now be laid to grass providing a 120,000 sq ft plot with the potential for a single building or campus style development that will be known as the Sidney Sussex development.



## UKSPA Update

BUILDING · TECHNOLOGY · BUSINESS

Tenants of Chesterford Research Park will see a number of improvements to UKSPA services over the next few months.

This will include a new look website [www.ukspa.org.uk](http://www.ukspa.org.uk) as well as developing the UKSPA "Affinity" scheme, which provides parks and their tenant companies with a range of essential services and supplies at discounted rates.

The updated website will provide more opportunities for companies on a member science or research park to promote their own news and services. The revised site will continue to feature the online

recruitment area for jobs on science parks plus its Lab-Space service, which details available laboratory space to potential tenants. It will also feature improved networking opportunities between UKSPA members.

The publication of the updated UKSPA Annual Directory and detailed planning for a national one day conference on July 2nd in Nottingham, on "The Future of Laboratories" is well underway. For more information contact [info@ukspa.org.uk](mailto:info@ukspa.org.uk) or visit the website.

# GCP unites the region at the Nucleus



➤ ADDRESSING DELEGATES AT THE GCP BREAKFAST BRIEFING.

Chesterford Research Park played host to guests of the Greater Cambridge Partnership (GCP) as they launched a new initiative to promote Greater Cambridge on the world stage.

Martin Sylvester, Director of Churchmanor Estates Company plc, sponsors of the GCP event welcomed over 60 guests at The Nucleus. They were out in force at the crack of dawn to attend the breakfast briefing which saw the GCP launch its Ambassador's Toolkit – a unified branding pack to help partners publicise the region internationally.

Louise Rushworth, International Relations Manager for GCP, and the driving force behind the new branding, said evidence had been collected as far afield as Bangalore to establish perceptions of Cambridge.

Chris Parkhouse, Chairman of GCP's International Relations Forum said: "With India producing 150,000 science graduates and as much as 75% of new multinational company R&D heading to

India and China, it's essential that Greater Cambridge can compete on a global stage. Acting as goodwill ambassadors and using the toolkit we can promote our area collectively, consistently and professionally to the benefit of the local economy and our businesses alike."

The interesting and informative event was packed full of presentations on topical issues impacting on businesses in the region. David Riches, CEO of East of England International updated attendees on how the local area fits in with global investment trends and Richard Hale from Cellzome, situated on Chesterford Research Park, spoke about the benefits of being located in one of Europe's leading biotechnology clusters.

The breakfast briefing took place at Chesterford Research Park's central facilities building - 'The Nucleus'. Katherine Maguire, Park Manager, said: "The Nucleus not only provides Park tenants with unrivalled facilities, but it has also become a hugely popular venue for other regional and business events."

# Moving in at the Mansion

Three new occupiers have moved into Chesterford Research Park's imposing 19th century Mansion House building to take advantage of its flexible space and be part of Chesterford's growing scientific community.

Glassworks International Ltd, a global glass manufacturer, which has been producing high quality glass products for over 60 years has taken Suite 12. Paul Morgan, Managing Director, at Glassworks said: "We believe that Chesterford offers a fantastic location with state-of-the-art facilities, such as the convenient gym and restaurant based at the hub of the park."

Following two successful years in Cambridge, SG Hambros Private



Banking has moved into Suite 11 to continue its rapid expansion in the area reflecting the company's ambitions for continued growth in the region.

Pulse Scientific, a specialist recruitment consultancy, has re-located its offices from London to Suite 4 at the Mansion House. Mathew Burns, Business Manager, at Pulse Scientific said: "We decided to re-locate our business to be nearer to our client base, which is predominantly situated in Cambridgeshire and Essex, yet remain within easy reach of London. We also wanted to move into space that would allow us to expand in the future as well as offering great facilities."

# New faces at Chesterford

Karl Smith and Michael Turner have both recently joined the management team at Chesterford Research Park.

Originally from Leeds, but now based in Cambridgeshire with his wife and two young children, Karl is the new Security and Park Services Manager. More than amply qualified for the role, Karl has spent his whole career within the security industry.



➤ KARL SMITH

➤ MICHAEL TURNER

After serving with the Royal Artillery for nine years, where he worked in the Close Protection Unit as a personal bodyguard for the Regimental Sergeant Major, he worked at a managerial level in the detention services sector before this move, now, into corporate security. Karl has a passion for motorbikes, and during his time in the forces, Karl was the lead rider for the Royal Artillery Motorcycle Display Team.

Michael is the Park's new Building Services Manager, who joined in January providing technical support. With a mechanical background and broad business experience within R&D, hotels, telecommunications and health sectors, Michael's understanding of occupiers' day-to-day needs is second to none, and is already having a major impact on the smooth running of the Park.

Michael is married with two children, a keen golfer and, like Karl, a great motorbike enthusiast.

# Planning submitted for Robinson Laboratory

The developers of Chesterford Research Park are keeping the development momentum going, with the submission of a planning application for the 60,000 sq ft Robinson Laboratory. Designed with two separate wings of laboratory space linked by an impressive two-storey atrium, that will house a number of meeting rooms and reception area, the Robinson Laboratory represents the ultimate in flexible design.

# News from The Nucleus...

## The Nucleus wins prestigious food award

The Nucleus, Chesterford Research Park's central facilities building, which hosts a contemporary restaurant and café bar has been awarded a prestigious Heartbeat Award for the second year in succession.

The award is given to food premises that reach excellence in food hygiene, safety and staff training. A wide range of healthy food on offer is also a big factor in winning the award.

The certificate, now displayed with pride in the Nucleus was presented during a ceremony at the Uttlesford District Council offices in London Road, Saffron Walden.



## Spring into Action

Put fitness on the agenda and take advantage of Chesterford's modern gym facilities and exercise studio with a busy schedule of classes to suit all abilities.

Test your fitness in the monthly gym challenge, which last month saw those brave enough put through their paces in a 1km sprint won by Matt Hims of Illumina in a blistering 3 minutes.

Also on offer are running events, cricket and football matches plus the chance to put your mental ability to the test at regular quiz nights.

Activities are open to both members and non-members – for more details please contact the gym on 01799 532 256.

## Forthcoming Events

- Five-a-Side Football Tournament
- Cricket Match
- Soft Ball Competition
- Park Sports Evening

## Tee Time

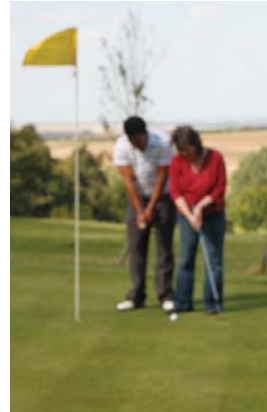
What's free to tenants, is just a stones throw away, and available for business or pleasure?

Chesterford Research Park's Golf Course is conveniently located and is ideal for team building or client events with hospitality provided by the Nucleus.

The 7 hole par 3 course has been trimmed and tended and is now open Monday to Friday from 08.00am to dusk until

October. Set within the grounds of Chesterford with tree-lined fairways it is undoubtedly one of the finest short courses in the region and is an enjoyable test for players of all levels from beginners to low-handicappers. Taking approximately 45 minutes you can even get round during your lunch break.

Over 100 people have already signed up this year – to join them contact the gym on 01799 532 256.



## HR Forum

The HR Forum is a specialist human resources meeting hosted by Chesterford Research Park for HR professionals and office managers based at the park.

From its inception in 2004, the HR Forum meets every quarter at which delegates discuss and take part in practical knowledge-sharing on subjects that include staff recruitment, appraisals, and current vacancies in addition to park developments and community updates.

It also provides an opportunity to discuss the park facilities and input ideas for social events and outings plus hear from a range of speakers and presenters.

One of its greatest benefits is that it gives HR professionals the opportunity to network with other specialists – sharing ideas and discussing mutual issues that matter most to tenant companies.

The next HR Forum will take place at the Nucleus on 10th July, for more details contact Katherine Maguire on 01799 532 252.

## Health, Body & Mind

Wellbeing and yoga sessions are being hosted at the Nucleus providing the opportunity to unwind, take time out and discover how to stay healthy.

The two hour wellbeing sessions include yoga, healthy eating advice and positive mental attitude meditation.

Sessions are available to individuals or groups and can be booked via the gym.

Yoga classes of 45 minutes are also run at lunchtime and after work.



## FOR MORE INFORMATION PLEASE CONTACT

PARK MANAGER: Katherine Maguire • +44(0) 1799 532252 • katherine.maguire@eu.jll.com

[WWW.CHESTERFORDRESEARCHPARK.COM](http://WWW.CHESTERFORDRESEARCHPARK.COM)



Developer



Letting Agents



Fund